

SNMP Web Manager

User's Manual

Table of Contents

1.	Introduction	2
2.	SNMP Web Manager Install, Quick Start and Uninstall	2
2.1.	Software Installation	3
2.2.	Software Quick Start	6
2.3.	Software Uninstall	7
3.	SNMP Web Manager GUI	7
3.1.	SNMP Device List	8
3.2.	Scan	8
3.3.	Add IP Address	8
3.4.	Delete IP Address	8
3.5.	Open web server page	9
3.6.	SNMP Status	10
3.7.	Reset	10
3.8.	Use system time	13
4.	SNMP Web Manager Function Menu	13
4.1	System	13
4.1.1	Login	13
4.1.2	Logout	14
4.1.3	Quit	14
4.2	Settings	14
4.2.1	Basic Info	14
4.2.2	IP Setting	15
4.2.3	Online upgrade	17
4.2.4	System manager	20
4.2.5	Static trap address	21
4.2.6	SMS Configuration	21
4.3	Language	26
4.4	Help	26

1. Introduction

SNMP Web Manager is a configuration wizard to configure SNMP web card in computer. For the detailed supported operation systems, please check next chapter. Users can search and configure all SNMP devices in the LAN via SNMP interface.

2. SNMP Web Manager Install, Quick Start and Uninstall

Supported OS:

- Windows 2000
- Windows XP/2003/Vista/2008 (32-bit & x64-bit)
- Windows 7 (32-bit & x64-bit)/ 8/8.1/10
- Windows server 2012/2012R2/2016
- Windows SBS 2011
- Linux RedHat 8, 9
- Linux RedHat Enterprise AS3, AS5, AS6 (32-bit)
- Linux RedHat Enterprise AS6 (64-bit)
- Linux RedHat Enterprise 5.2 (32-bit & 64-bit)
- Linux SUSE 10 (32-bit & 64-bit)
- Linux Cent OS 5.4 (32-bit)
- Linux Ubuntu 8.X, 9.X, 10.X (32-bit)
- Linux Ubuntu 10.X (64-bit)
- Linux Ubuntu 12.04 (32-bit & 64-bit)
- Linux Fedora 5
- Linux OpenSUSE 11.2 (32-bit & 64-bit)
- Linux Debian 5.x, 6.x (32-bit)
- Linux Debian 6.x (64-bit)
- Mac OS 10.6 (x64-bit)/ 10.7 (x64-bit)/ 10.8(x64-bit)/10.9(x64-bit)/
10.10(x64-bit)/10.11(x64-bit)/10.12(x64-bit)/10.13(x64-bit)

Software Installation

Step 1: Click install file, it will display the installation in process. Refer to the diagram 2-1.

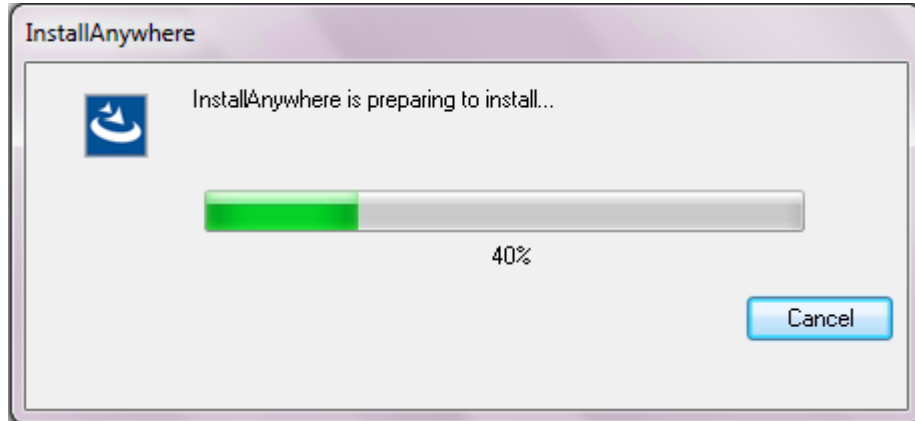


Diagram 2-1

Step 2: Click "Next" to proceed to the next screen as Diagram 2-2.

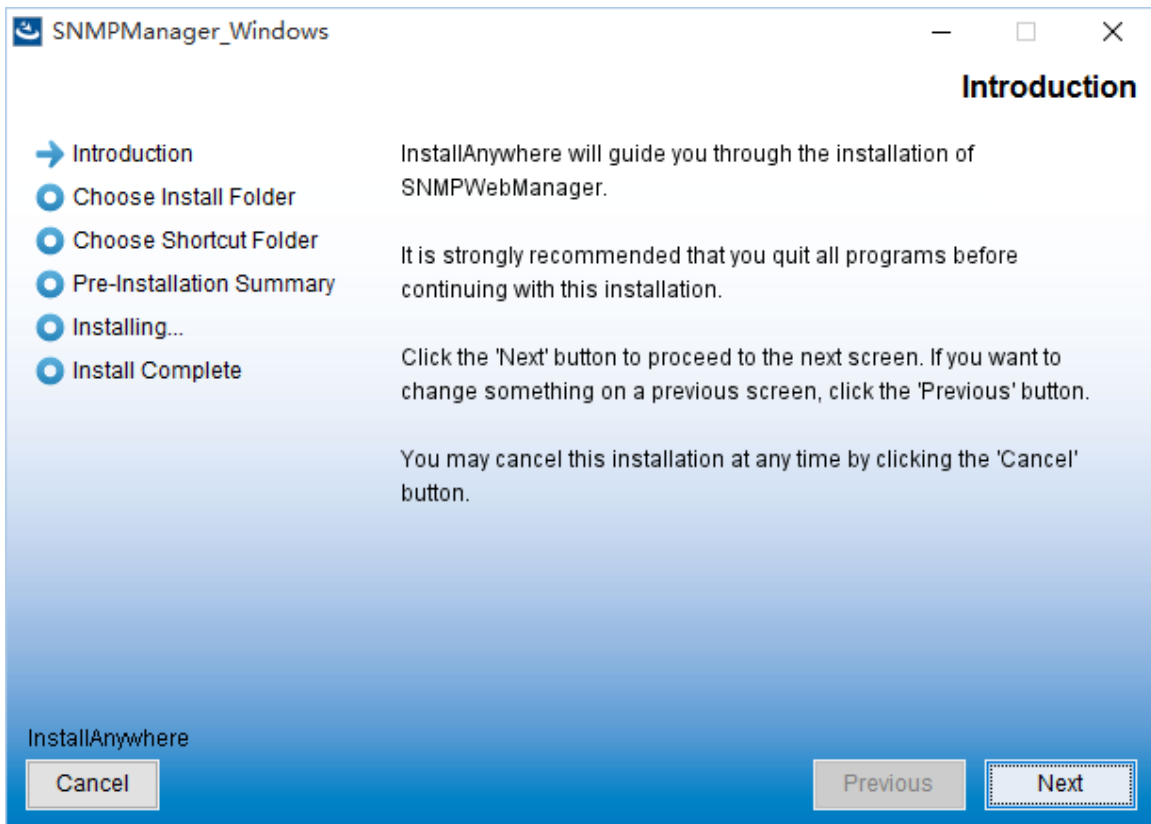


Diagram 2-2

Step 3: Click "Choose" button to change the default folder. After choosing the installed folder, click "Next" button. Refer to the following diagram 2-3.

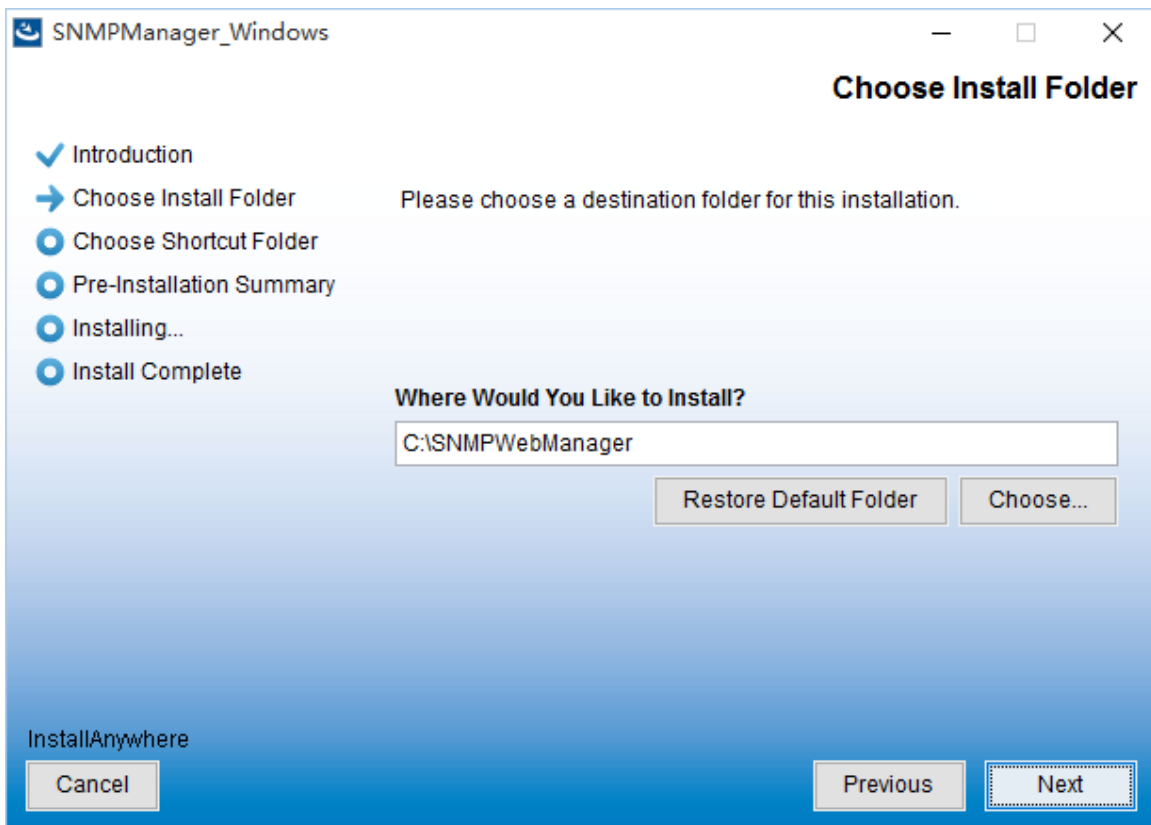


Diagram 2-3

Step 4: Choose the shortcut folder and click "Next" button. Refer to the following diagram 2-4.

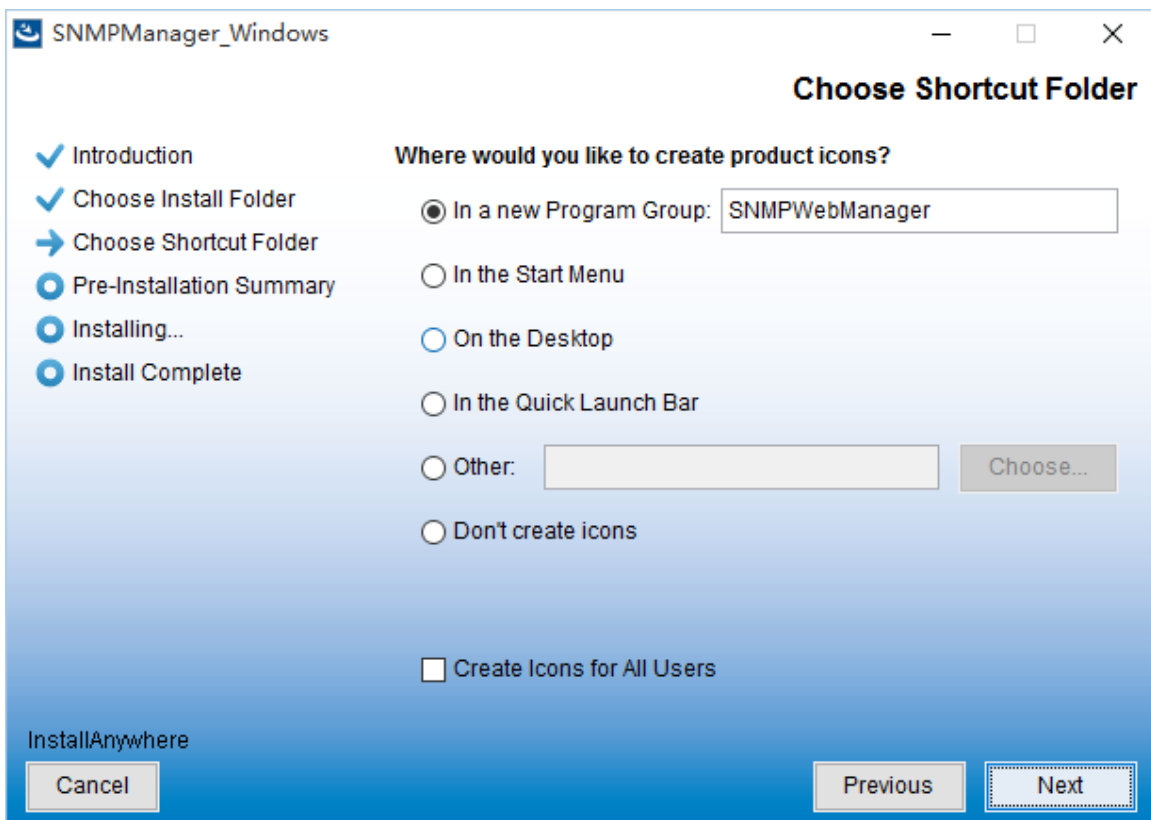


Diagram 2-4

Step 6: It will display the software summary before installation. Click "Install" button to start the installation and refer to Diagram 2-5.

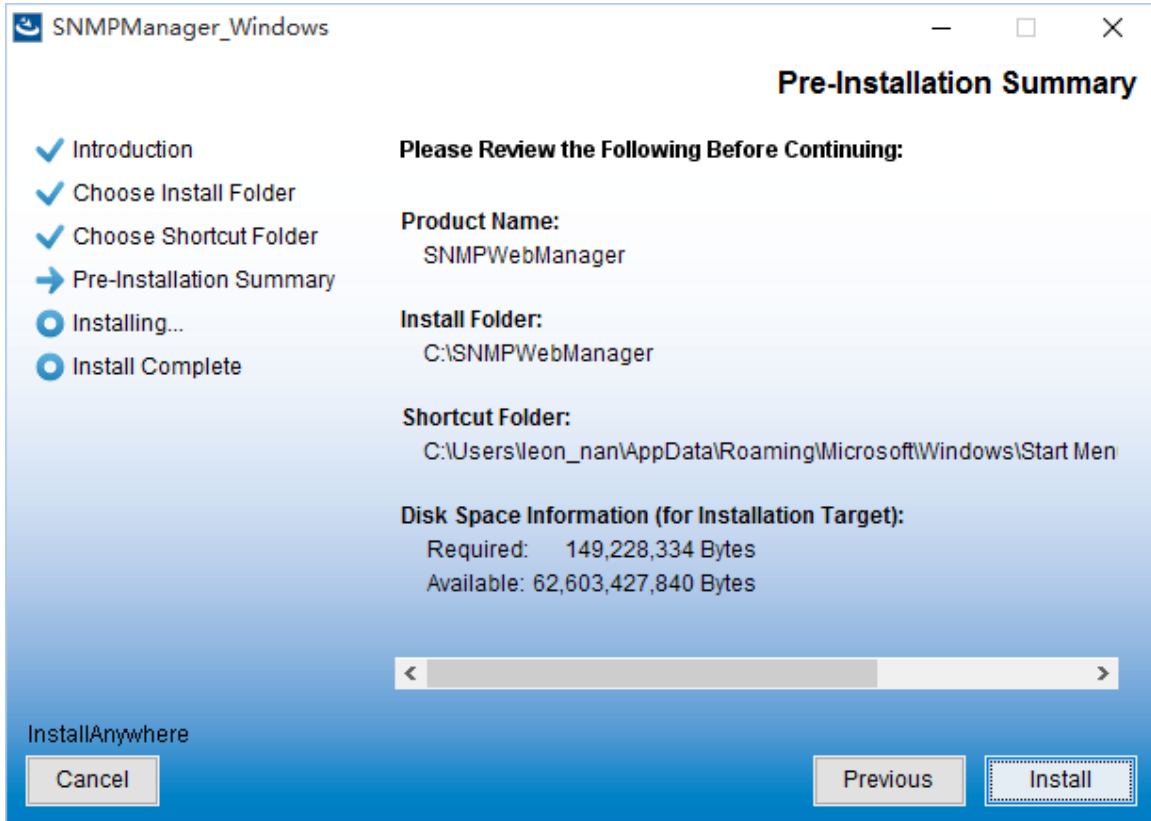


Diagram 2-5

Step 7: Click "Done" button to confirm the installation completely.

Refer to Diagram 2-6.

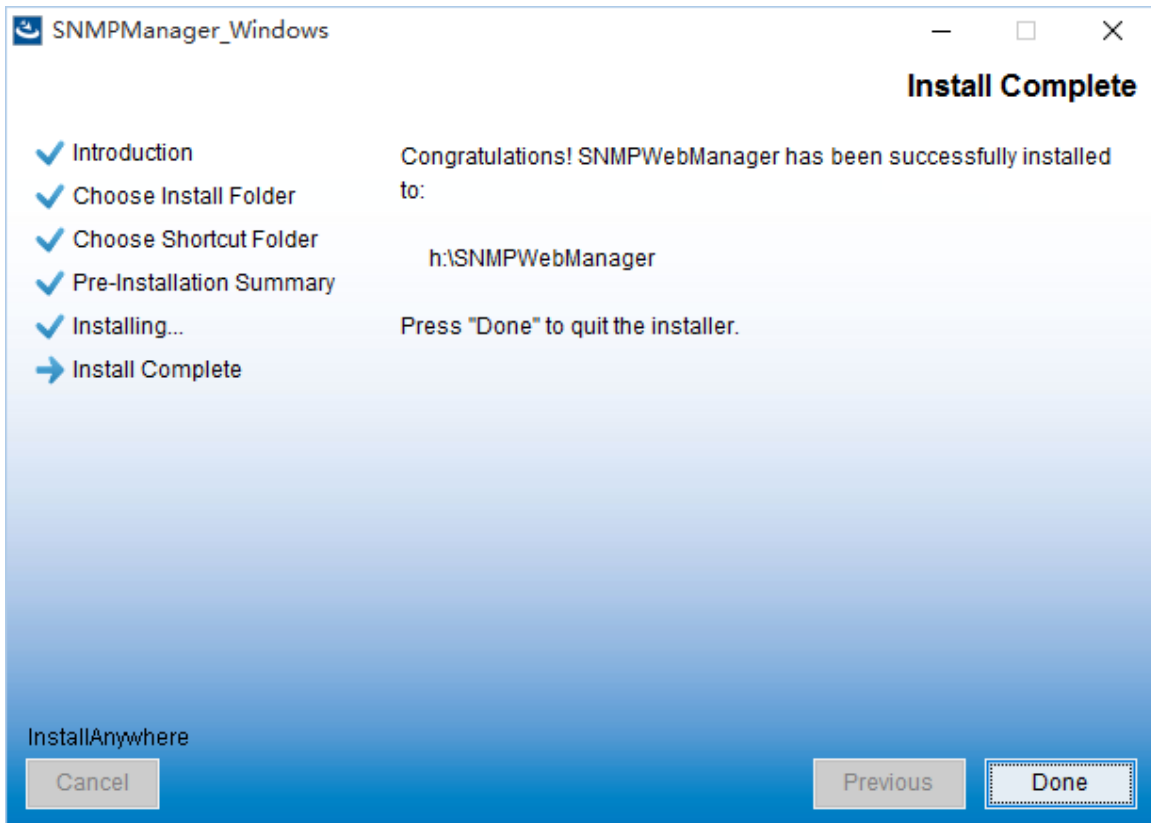


Diagram 2-6

Note: Please uninstall the previous version before install the new version software.

2.1. Software Quick Start

The Installer will leave a shortcut icon on your desktop. Simply click the shortcut. Then it will start the software. Refer to below diagram.

Or, use the Start Menu method; Start >> All Programs >> SNMP Web Manager >> SNMP Web Manager



2.2. Software Uninstall

Note: Before uninstall software, you must stop all software programs first and then log in as "Administrator"! Otherwise it can't be uninstalled completely.

Please choose Start >> All Programs >> SNMP Web Manager >> Uninstall. Then follow the on-screen instruction to uninstall the software.

3. SNMP Web Manager GUI

The GUI has four sections as marked in the illustration below:

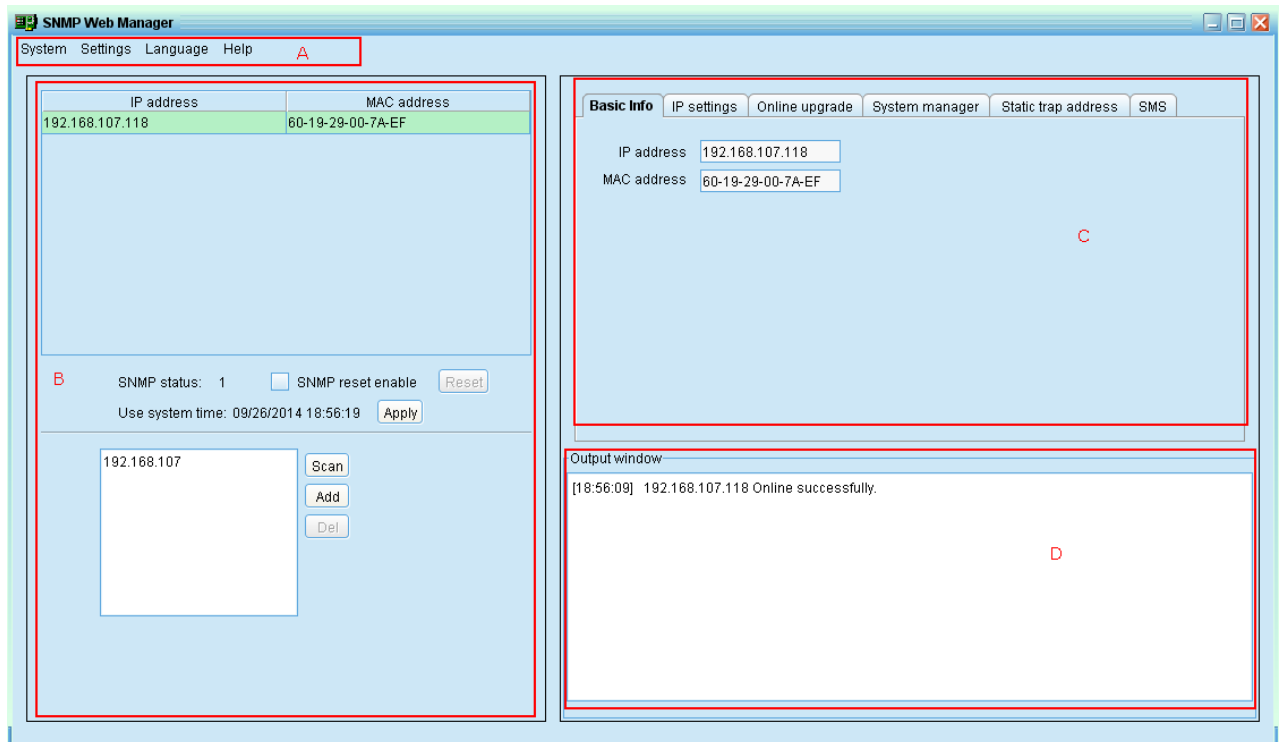


Diagram 3-1

A. Function menu offers complete tool-set for navigating and setting the GUI.

B. SNMP device list can list down all SNMP devices located in current IP address.

C. Configuration area includes IP settings, online upgrade, password management, and static trap address.

D. Output window displays all messages for operations

3.1. SNMP Device List

The default value in window list would be current PC IP address. For example, if IP address of current PC is "192.168.102.10", it will display "192.168.102" in list when first enabling SNMP Web Manager.

3.2. Scan

You may enter specific IP address and then click "Scan" button to search.

3.3. Add IP Address

Click "Add" button and it will pop up a window to ask for entering specific IP address. Then, click "Apply" button to add IP address (Subnet). Refer to Diagram 3-2.

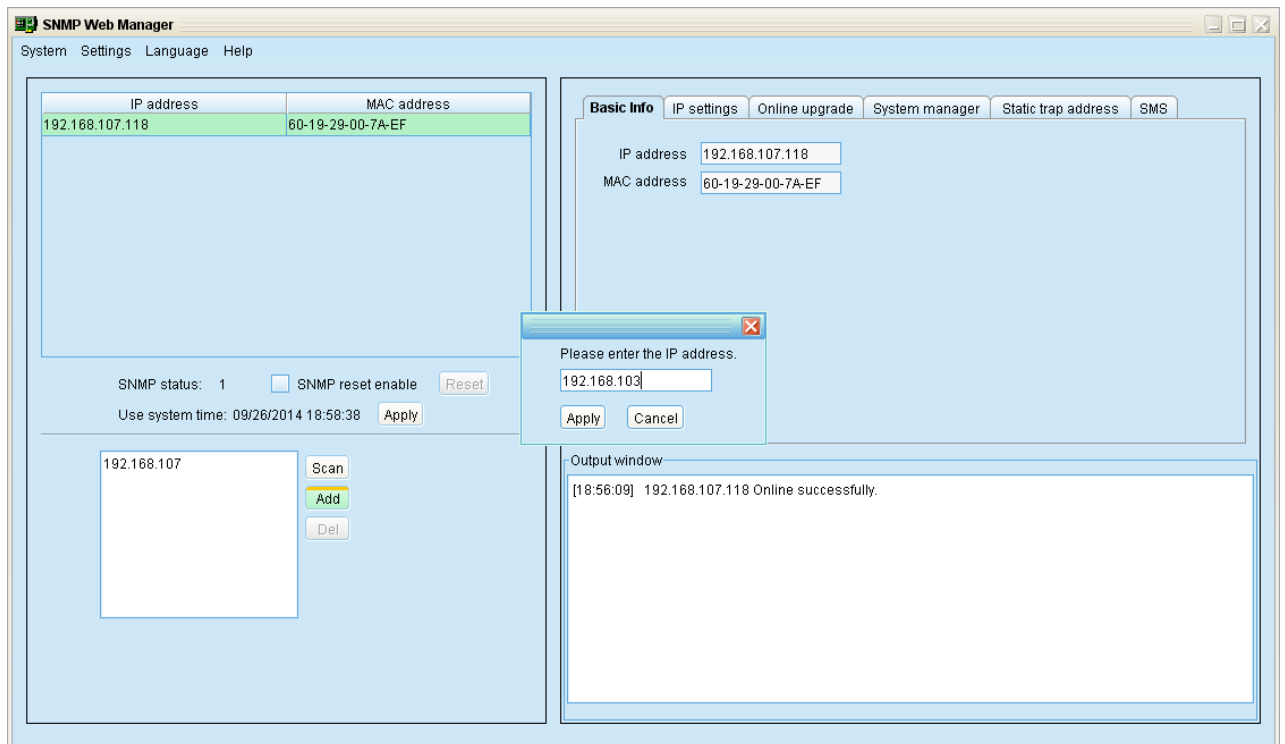


Diagram 3-2

3.4. Delete IP Address

Select unnecessary IP address from list and click "Del" button to delete from list.

3.5. Open web server page

Double click device list to open web server page. Refer to Diagram 3-3.

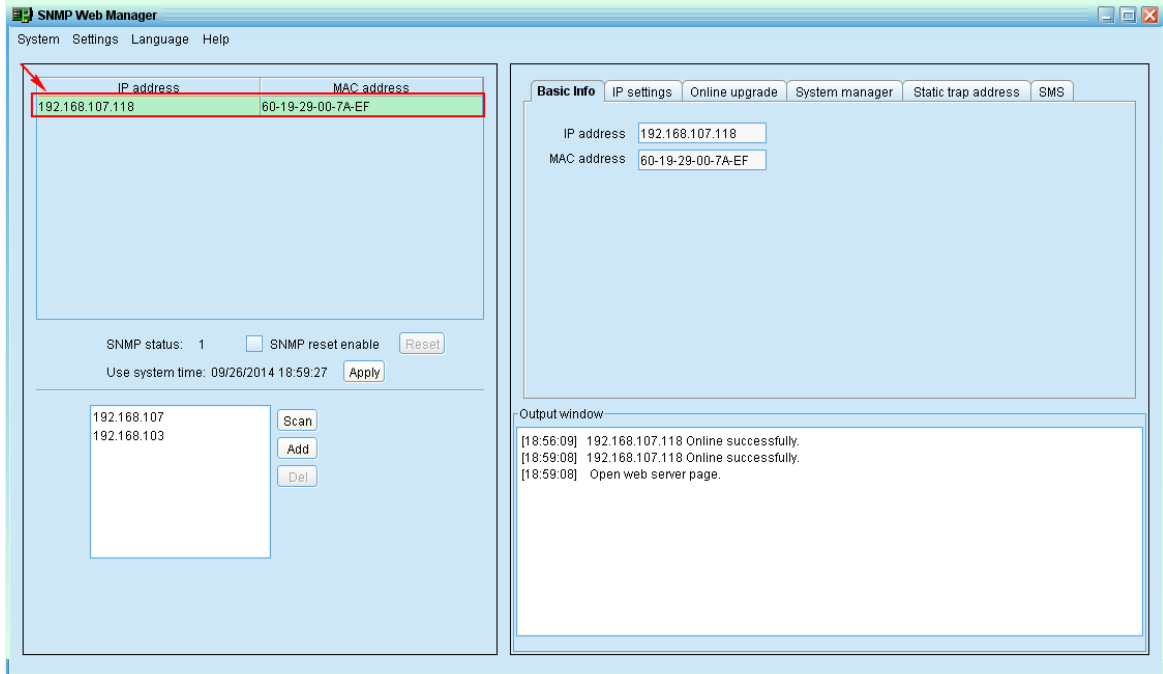


Diagram 3-3

You will see the SNMP web server page, Refer to Diagram 3-4.

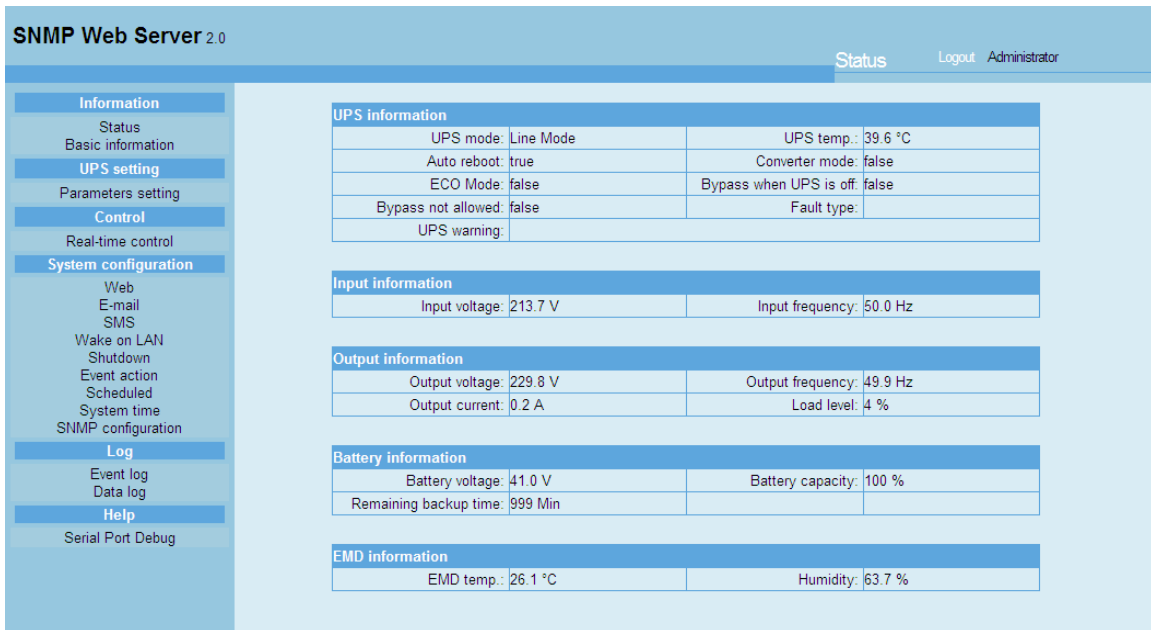


Diagram 3-4

3.6. SNMP Status

After one IP address is selected from the IP list, SNMP status will become 0 or 1. If SNMP card has program inside, SNMP status becomes 1. If it has not program inside, SNMP status becomes 0. If none of any IP address is selected, SNMP status will display "---" as default. Refer to Diagram 3-5.

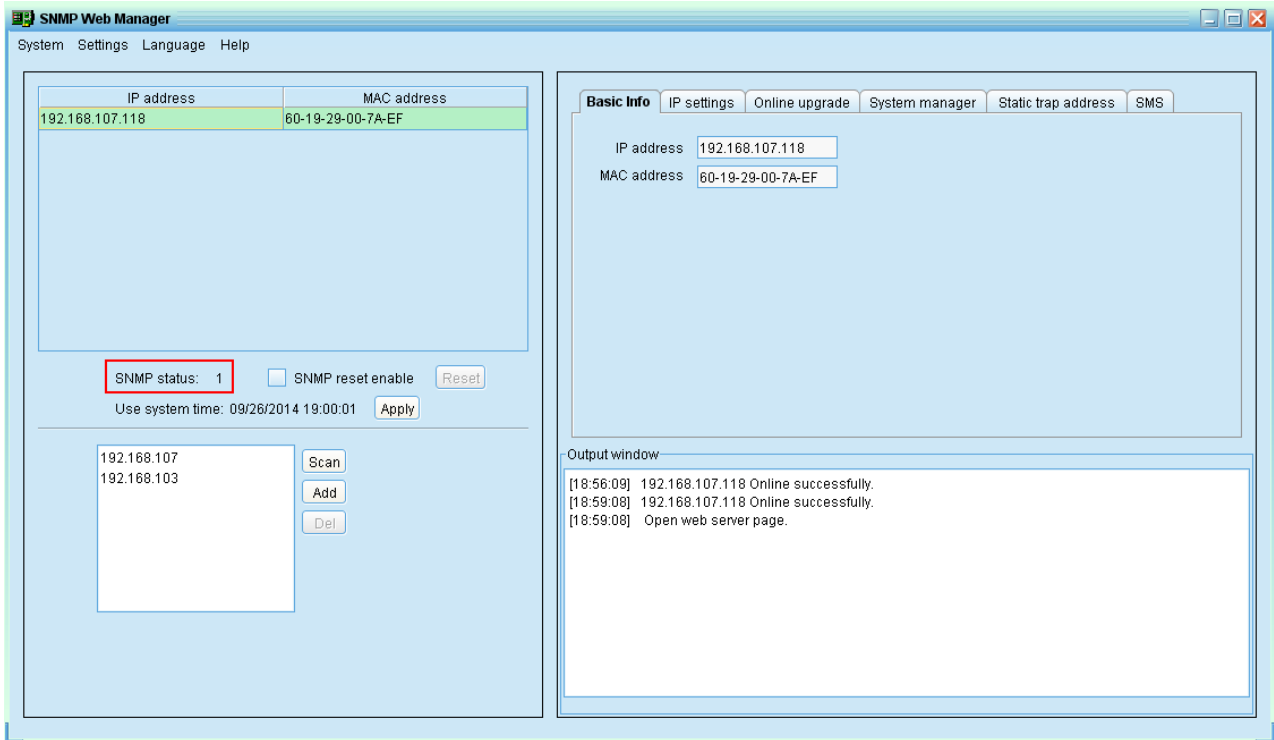


Diagram 3-5

3.7. Reset

If it is requested to restart the IP address of device, please select "SNMP reset enable" and click on the "Reset" button. After confirming the login, you can restart the device. Steps are as follows:

Step1: Select IP address needed to restart from IP list. Refer to Diagram 3-6.

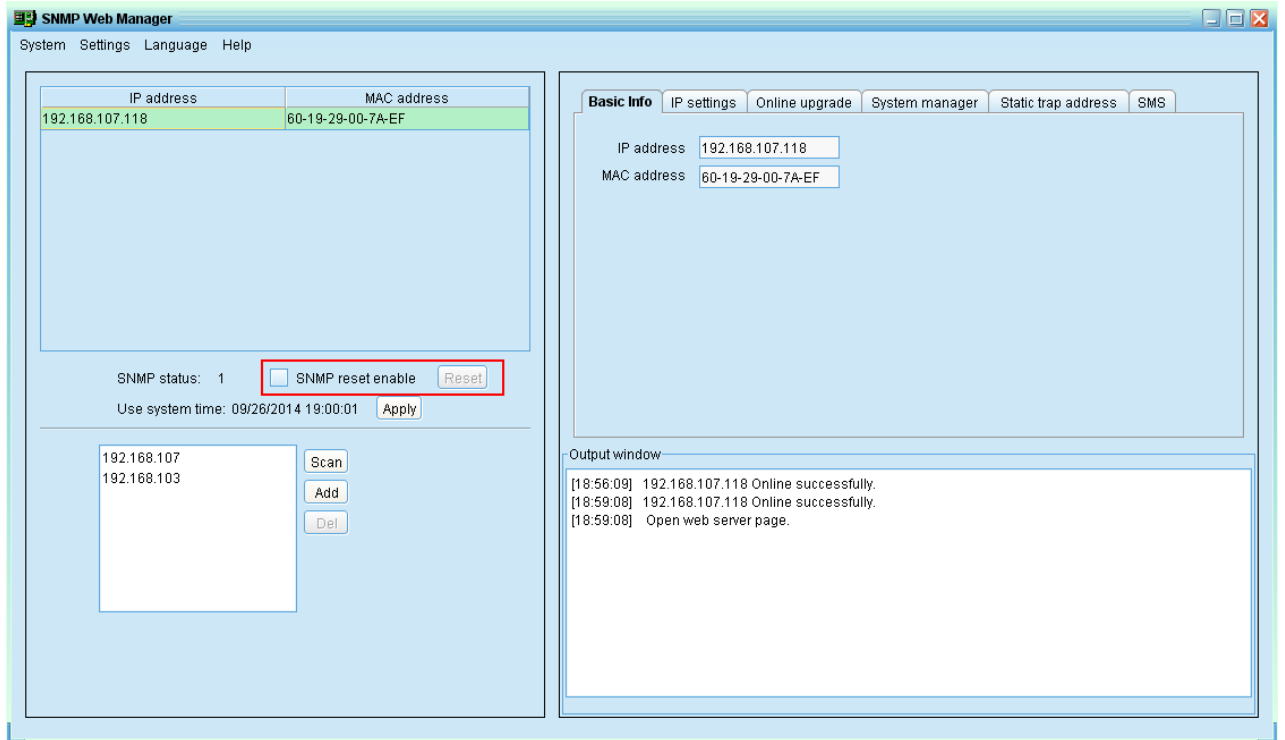


Diagram 3-6

Step2: Click checkbox of "SNMP reset enable". Then, "Reset" button will become available to click. Refer to Diagram 3-7.

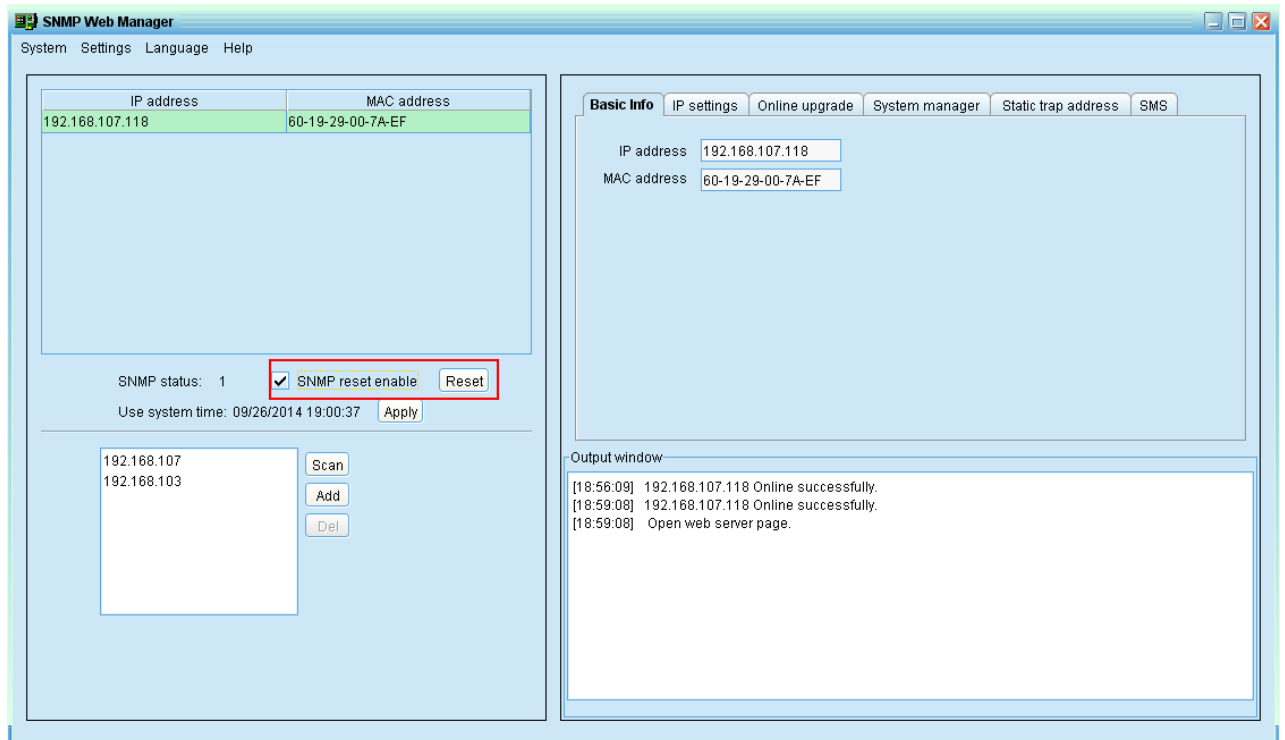


Diagram 3-7

Step3: Click "Reset" button and it will prompt dialog to confirm this operation. Refer to Diagram 3-8.

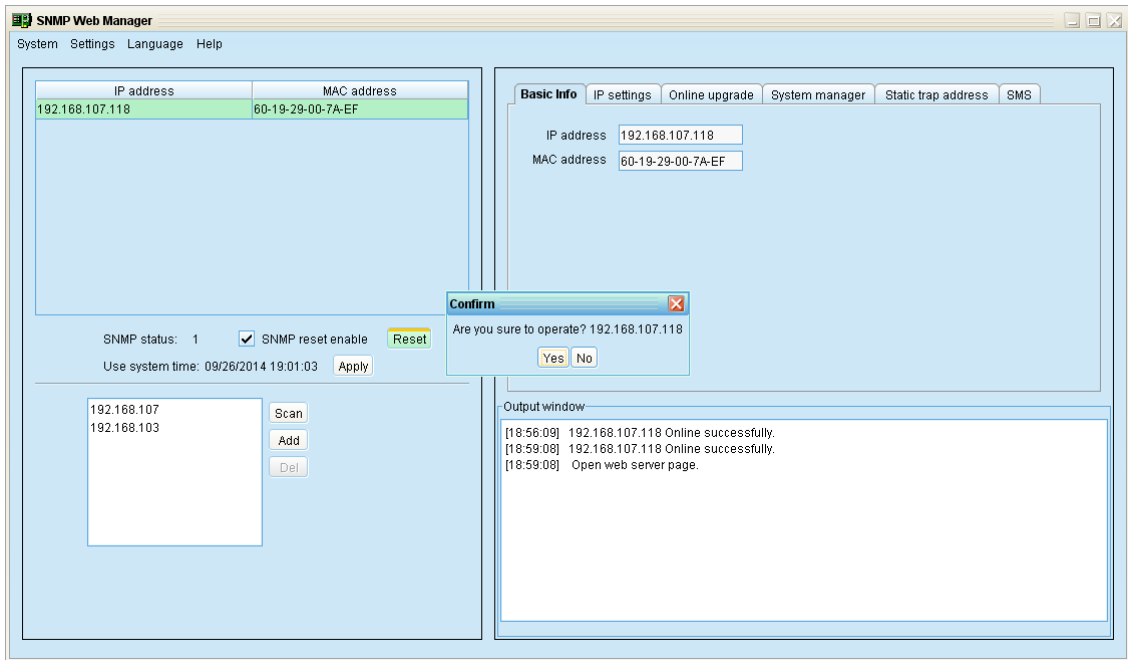


Diagram 3-8

Step4: Click "Yes" button and it will pop up a dialog to ask login. If "No" is selected, this operation will be suspended. Refer to Diagram 3-9.

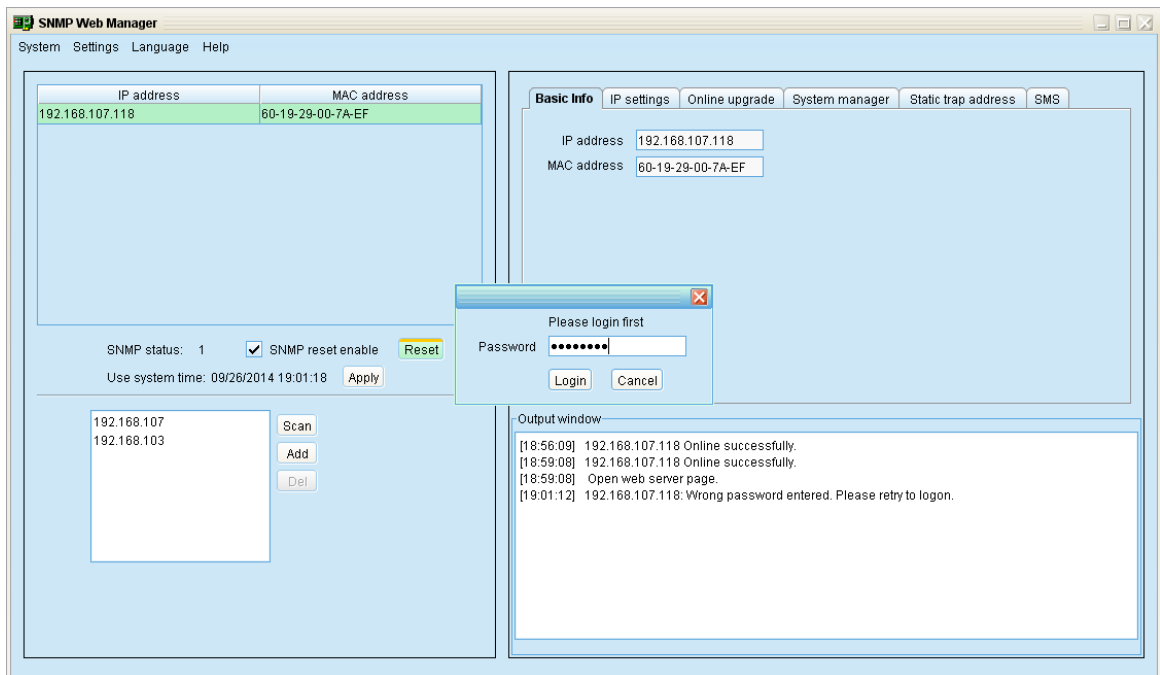


Diagram 3-9

Step5: Enter password and then click "Login" button. The target device will be restarted.

NOTE: If changing MAC address of current device before reboot and current device is obtained by DHCP (Automatically obtain IP address), you need to manually click "Scan" button to get IP address after reboot.

3.8. Use system time

If you select use system time, SNMP card will use PC system time. Refer to Diagram 3-10.

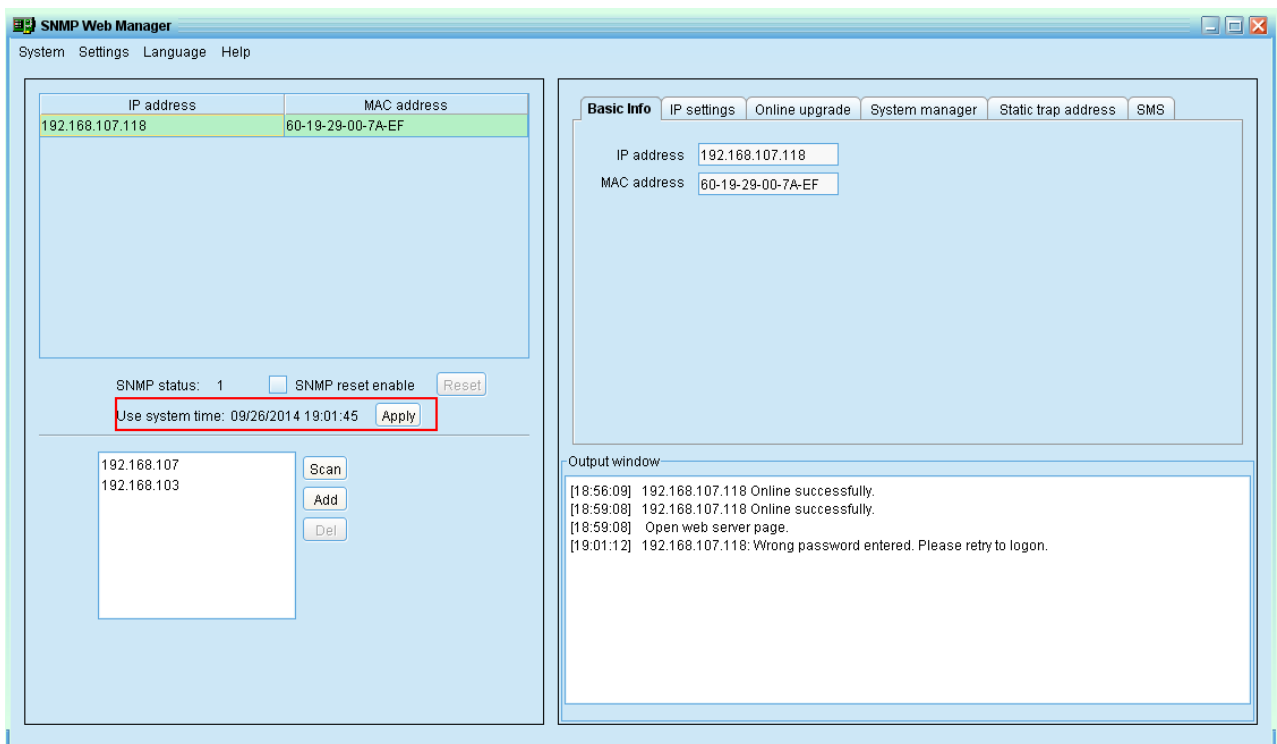


Diagram 3-10

4. SNMP Web Manager Function Menu

4.1 System

4.1.1 Login

When remotely login to access SNMP devices, it's necessary to verify ID. The default password is "12345678".

Step1: Select System >> Login

Step2: Enter default password and then click "Login" button. Or click "Cancel" to cancel login. Refer to Diagram 4-1.

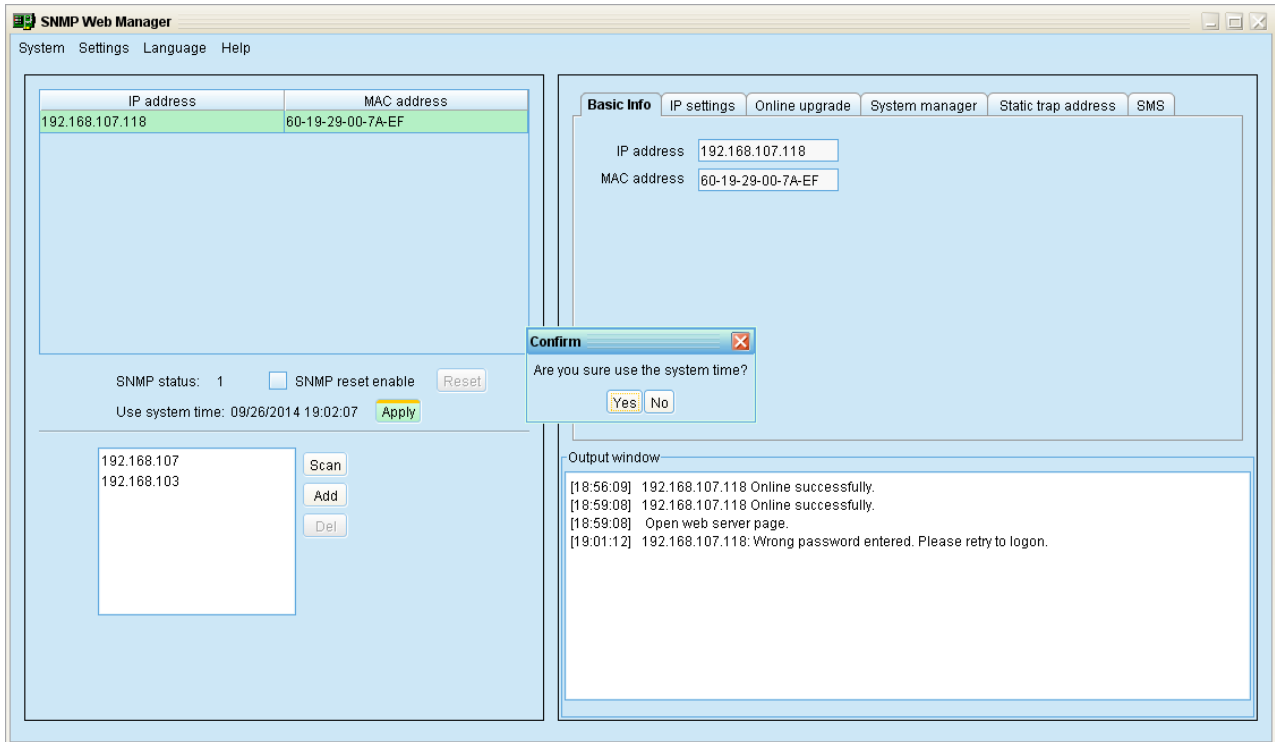


Diagram 4-1

4.1.2 Logout

Log out system when access is no longer needed.

4.1.3 Quit

Select "Quick" to exit SNMP Web Manager.

4.2 Settings

4.2.1 Basic Info

Basic information displays IP address and Mac address. Refer to Diagram 4-2.

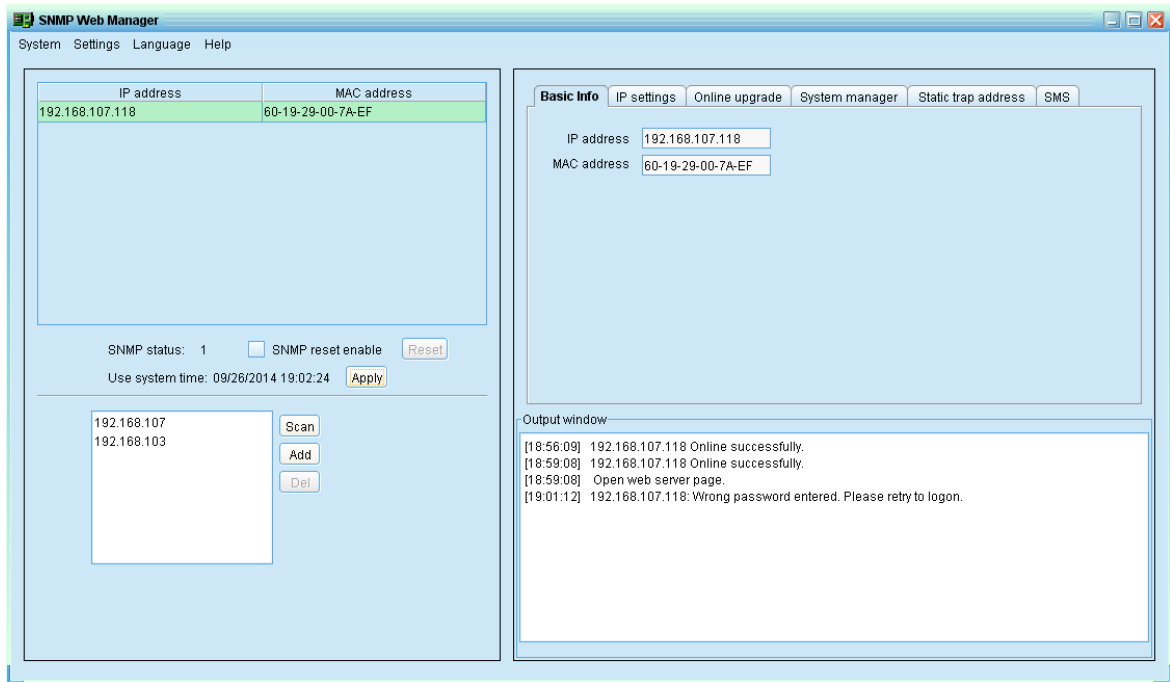


Diagram 4-2

4.2.2 IP Setting

Part 1: MAC address

Step : Select IP address from IP list. It will display MAC address of device in the output window. Refer to Diagram 4-3.

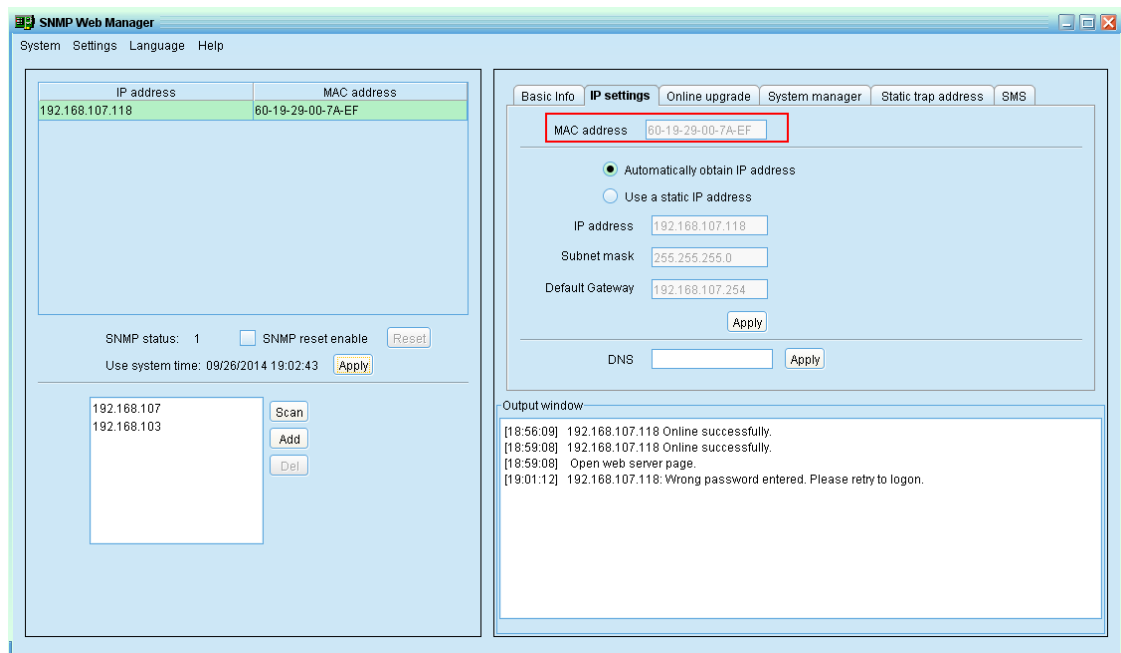


Diagram 4-3

Part 2: There are two methods to obtain IP address:

- Automatically obtain IP address (DHCP)
- Manually configure IP address

The system will default automatically obtain IP addresses. If there is no this kind of service provided in LAN, the default IP will display as “192.168.102.230”, Net mask as “255.255.255.0” and default gateway as “0.0.0.0”. Refer to Diagram 4-4.

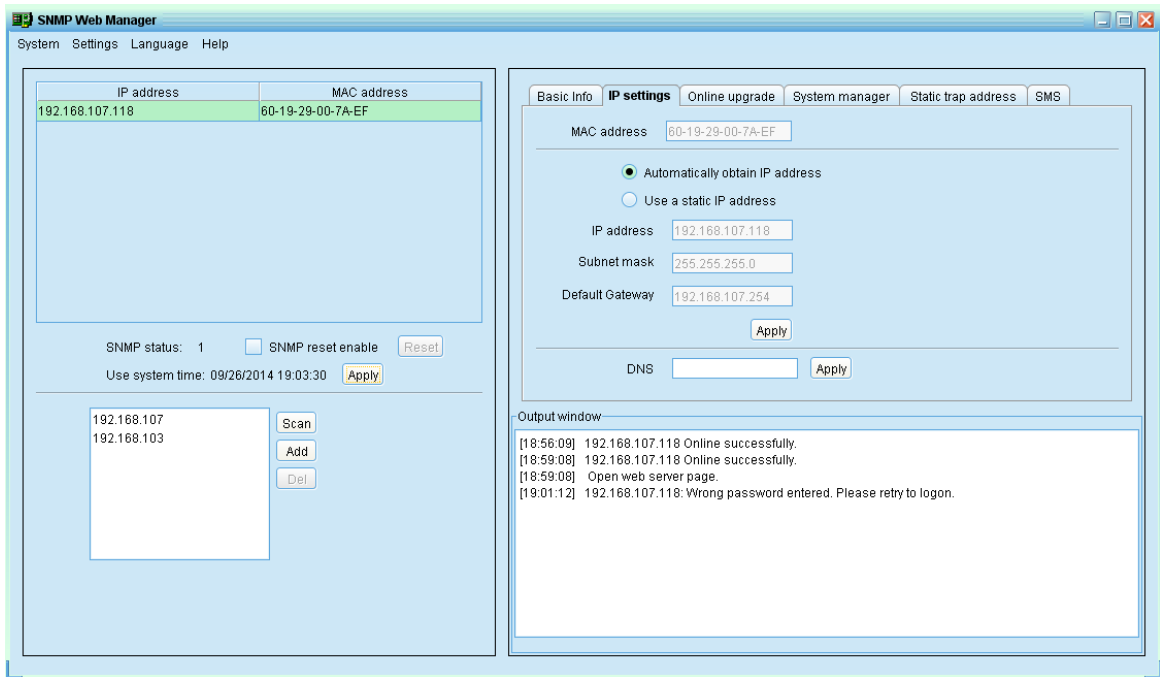


Diagram 4-4

Part 3: DNS setting:

Enter the DNS and then click “Apply” button. Refer to Diagram 4-5.

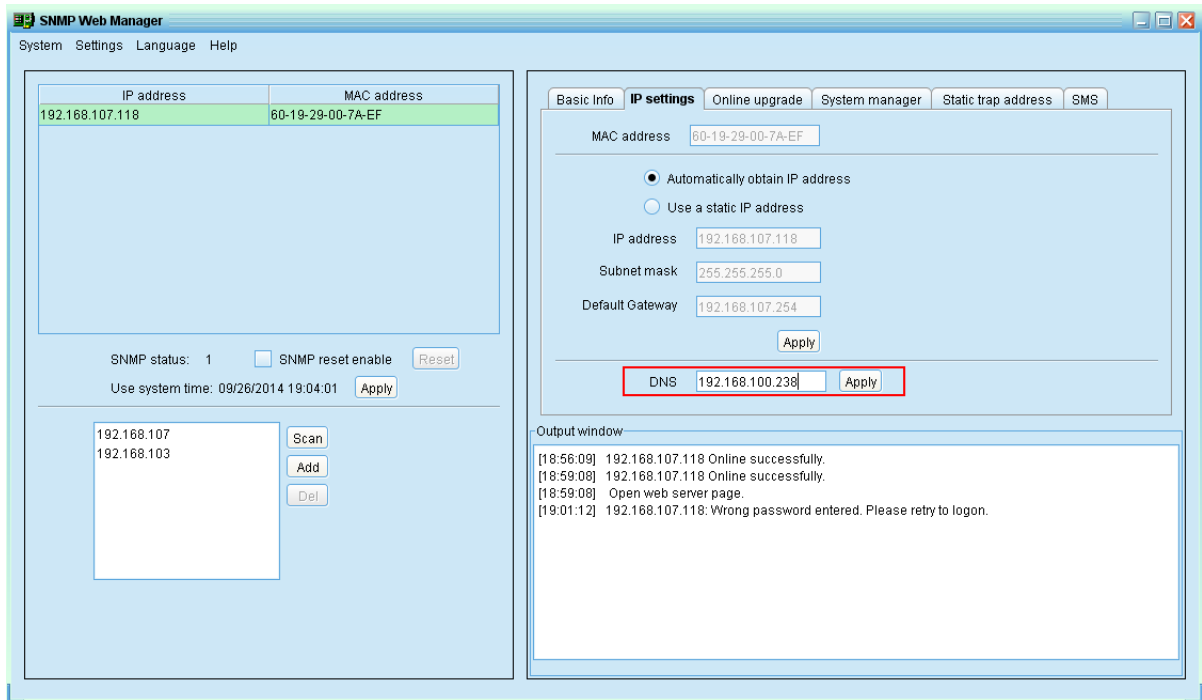


Diagram 4-5

4.2.3 Online upgrade

There are three methods for online upgrade:

- Upgrade the selected devices: It will upgrade all SNMP devices listed on the window.
- Upgrade all un-upgraded devices: It will only upgrade SNMP devices which are not using the same version as current SNMP device is.
- Force to upgrade all devices: No matter what kinds of version are used for SNMP devices listed in the window list, it will upgrade all devices to the latest version used in current SNMP device. Refer to Diagram 4-6.

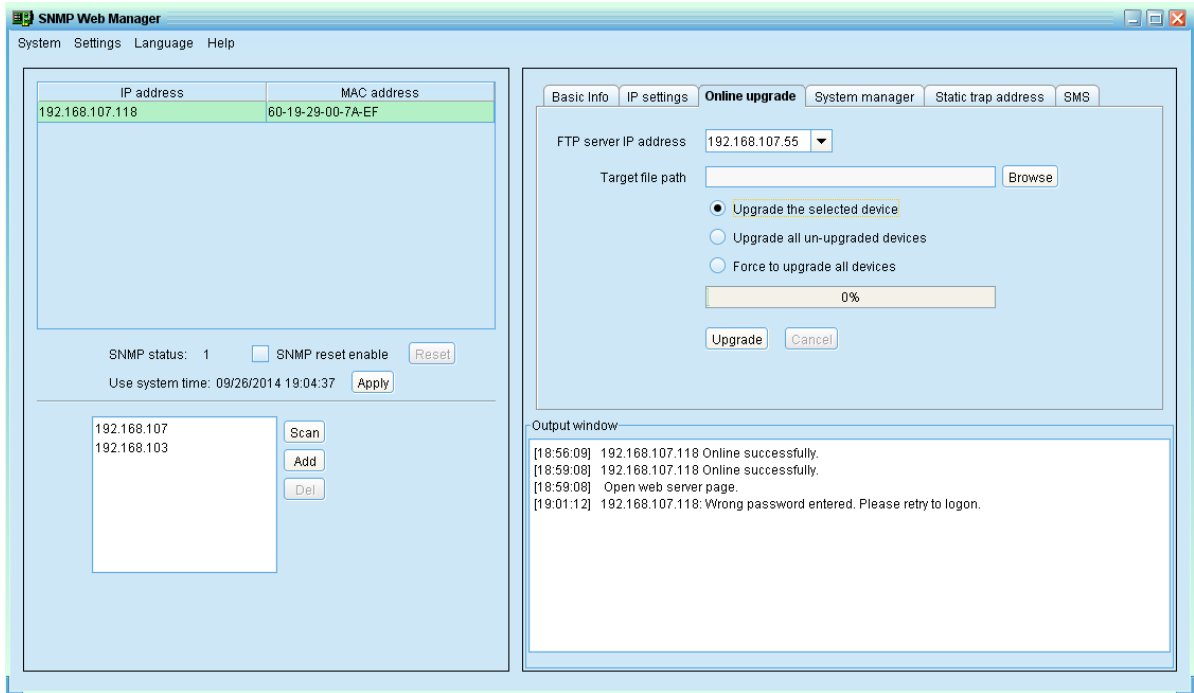


Diagram 4-6

Step1: select the FTP server IP address. Refer to Diagram 4-6.

NOTE: If applying upgrade for SNMP Web Server in LAN, FTP server IP address will be IP address of current PC in LAN. If applying upgrade for SNMP Web Server in specific networking, FTP server IP address will be IP address of current PC in Internet.

Step2: Click "Browse" button to choose program file. Refer to Diagram 4-7.

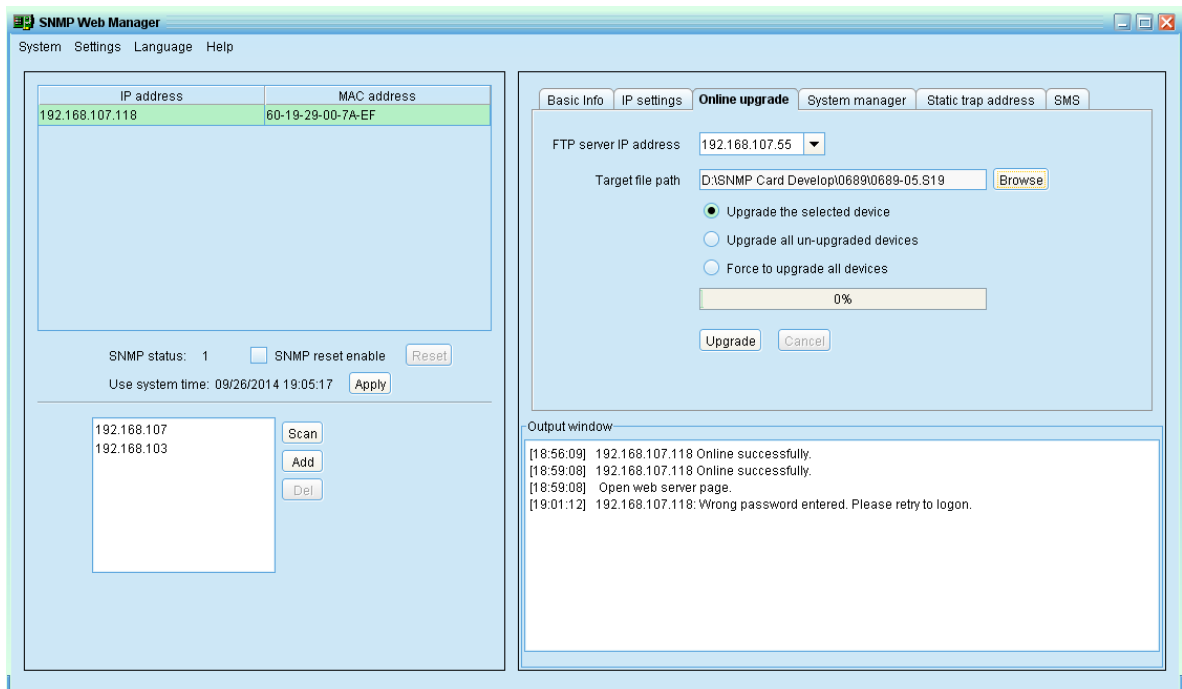


Diagram 4-7

Step3: Click "Upgrade" button to execute upgrade action. Refer to Diagram 4-8.

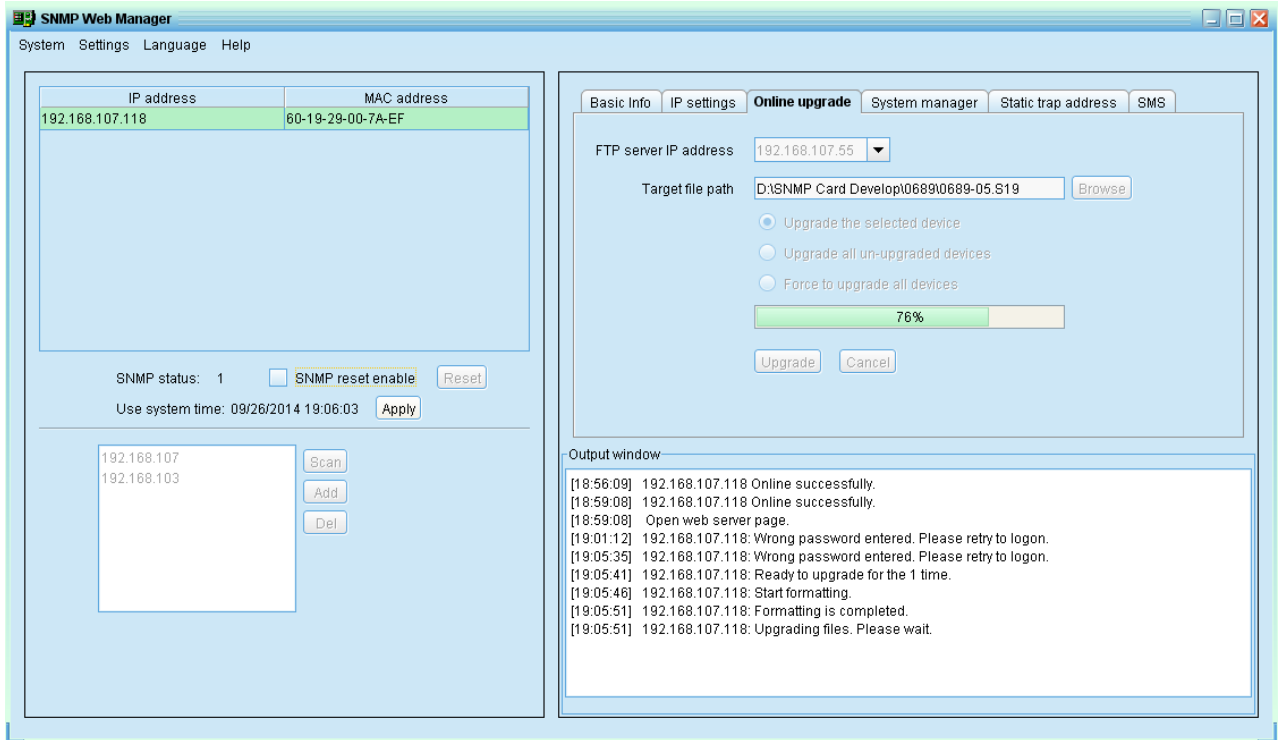


Diagram 4-8

Step4: When upgrade is complete, you may check the message in output window. Refer to Diagram 4-9.

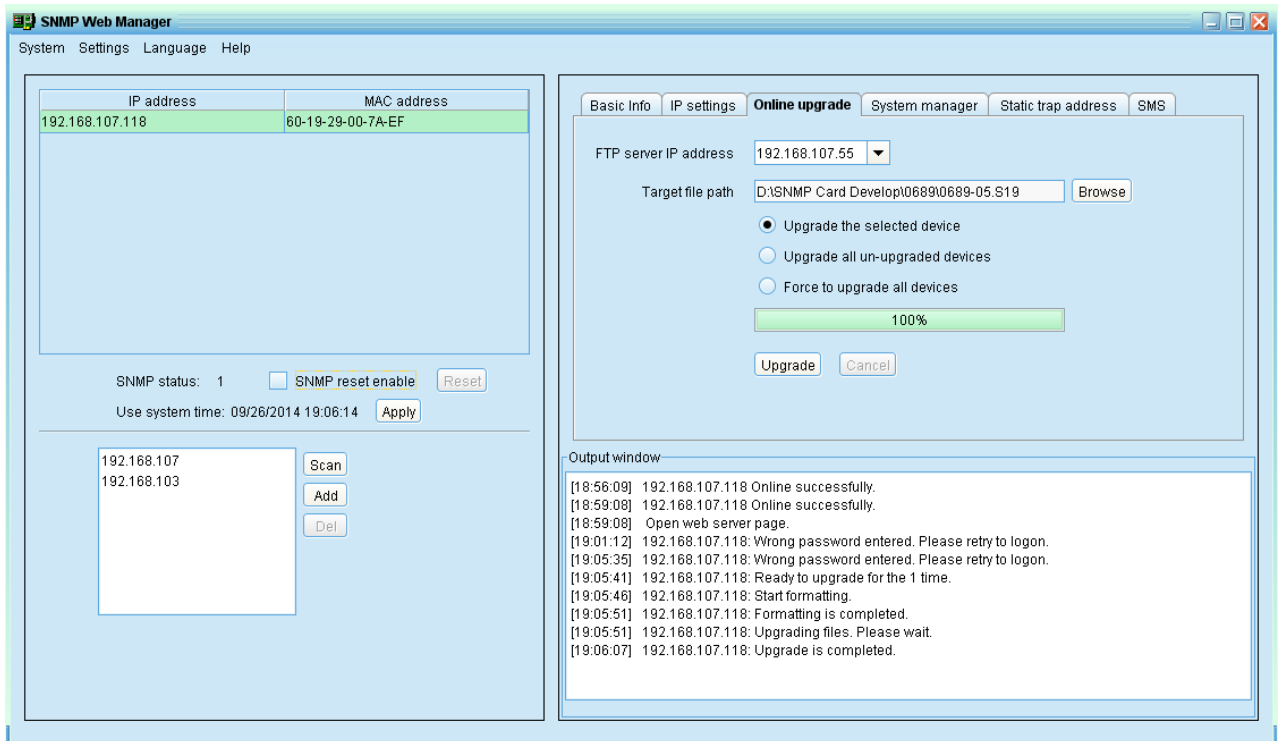


Diagram 4-9

NOTE: If abnormal situation occurs during upgrade process, the system will automatically re-start the upgrade operation. If this interruption occurs five times, system will automatically stop this operation. At this time, please check if LAN is working fine or

not.

4.2.4 System manager

You may modify single password for one SNMP device or all passwords for all SNMP devices. Refer to Diagram 4-10

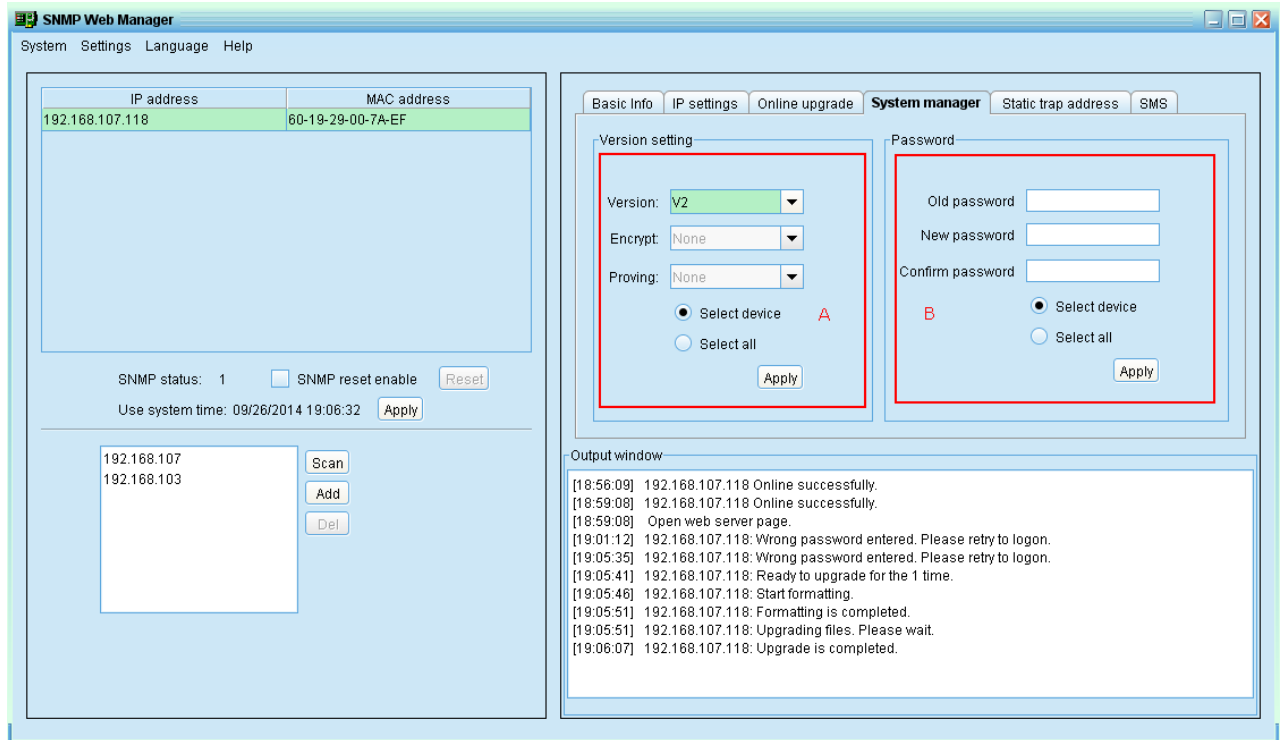


Diagram 4-10

A. Version setting:

You can set SNMP protocol version. It also supports SNMP V3 protocol to monitor data.

- Select device: Choose to set SNMP protocol version for selected SNMP devices on the window list.
- Select all: Choose to set SNMP protocol version for all SNMP devices on the window list.

Choose SNMP protocol version, the default is V2. If you choose V3, you should also set encrypt. Then, click "Apply" button to apply version setting.

B. Password:

You can modify password.

- Select device: Choose to change password for selected SNMP device on the window list.
- Select all: Choose to change passwords for all SNMP devices on the window list

Enter original password, new password and re-enter new password to confirm. Then, click "Apply" button to apply password change.

NOTE: The length of password is 8~15 digits. If this password change is applied for all SNMP devices, all SNMP devices passwords must be consistent.

4.2.5 Static trap address

You may configure two static trap addresses and change trap port in SNMP Web Manager. The default trap port is 162. Refer to Diagram 4-11.

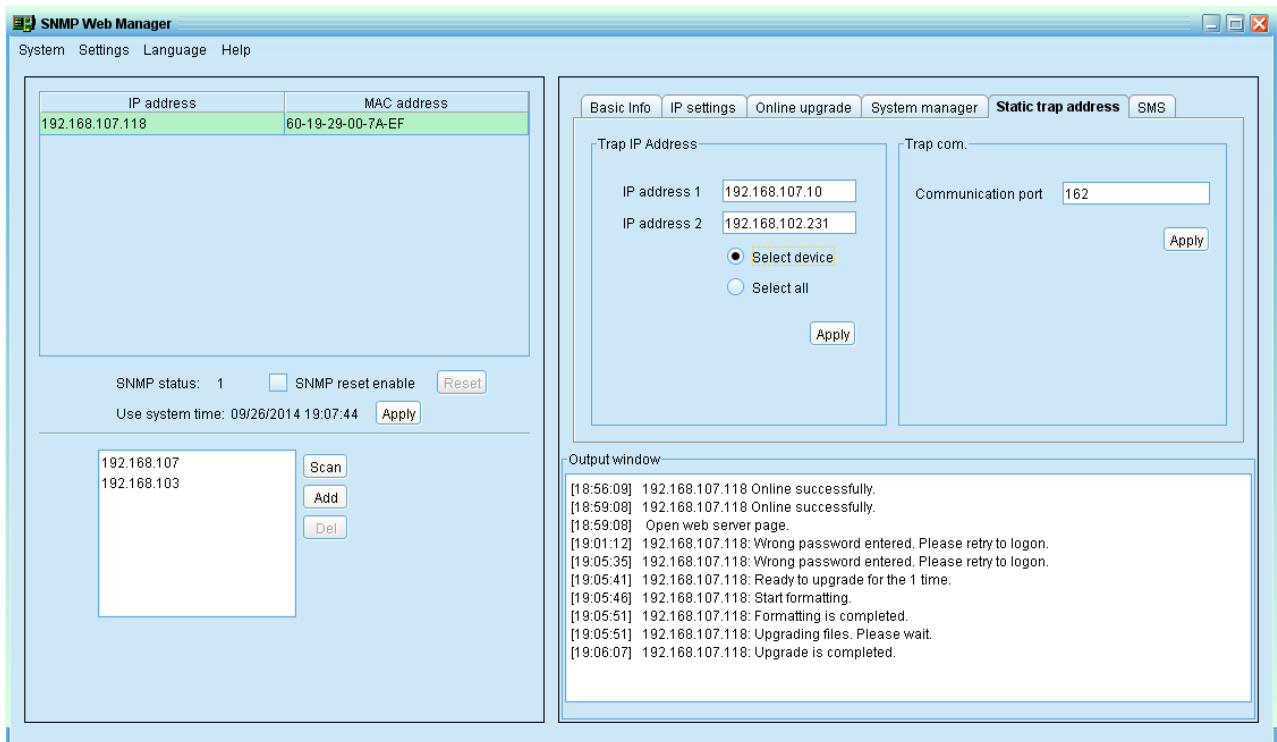


Diagram 4-11

NOTE: The SNMP device could provide 2 static trap addresses and 8 dynamic trap addresses. The SNMP device will automatically obtain IP address of host machine which installed monitoring software as dynamic trap address. **If one of dynamic trap address is inactive for over 10 minutes, SNMP device will automatically release it and obtain a new dynamic trap address.**

4.2.6 SMS Configuration

It's for entering SMS recipient list. In the event of an alarm condition occurring, a message about UPS status will be sent to the specified users via mobile phone.

Step 1 Select SMS. Refer to Diagram 4-12.

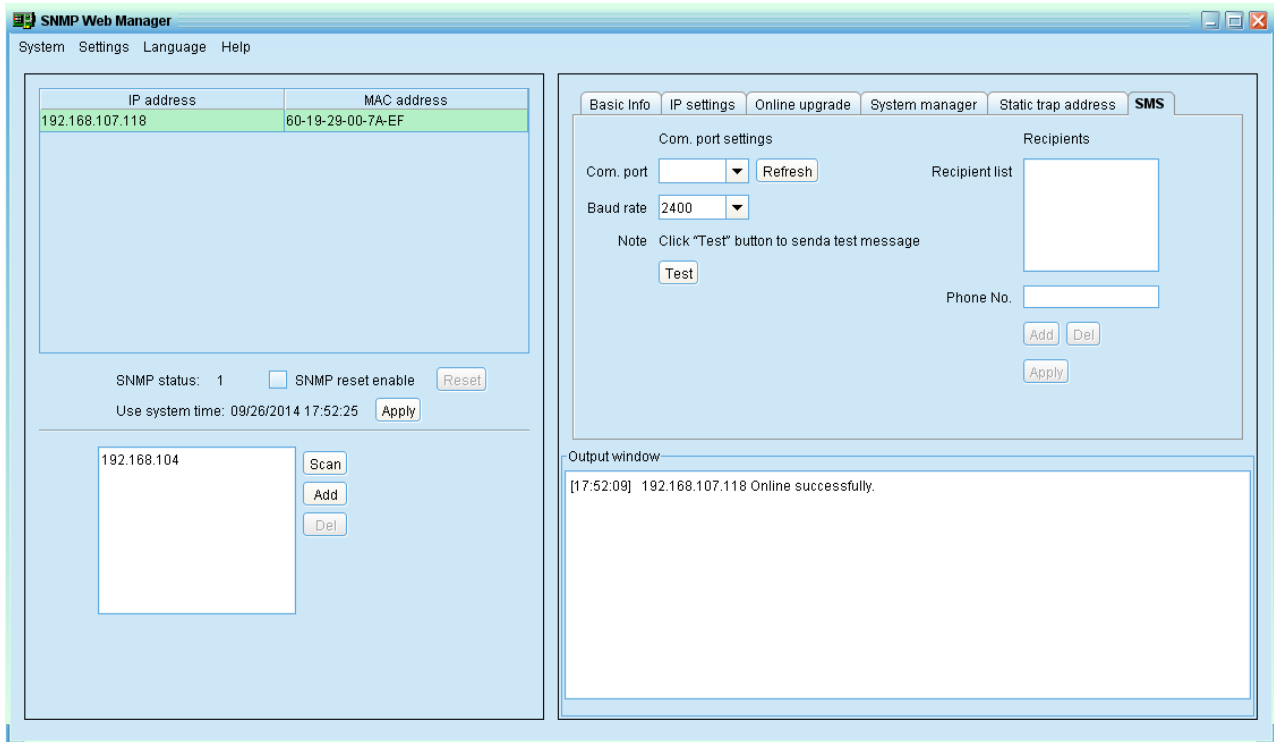


Diagram 4-12

Step 2 Select communication port and baud rate.

Step 3 Enter mobile phone numbers in "Phone no." column and click "Add" button to add phone no. in Recipients. To delete numbers, simply select phone no. from "Recipients" and click "Del" button.

Step 4 Click "Apply" button to save all changes. The "Test" button can be used to send a test SMS to confirm the correct operation. If all parameters are set up correctly, system will send a test message to all receivers and pop up a successful message. (Refer to Diagram 4-13) Otherwise, it will pop up a failure dialog to indicate there is an error for parameter setting. (Refer to Diagram 4-14)

NOTE: This SMS setting is for testing only. Be sure to enter all settings in SMS page of SNMP web server or ViewPower Pro software. For the detailed settings, please check section 3.4.3 in SNMP web management manual or 5.8.4 in ViewPower Pro software manual.

当仅有SNMP Web Manager运行时，要实现ups事件的SMS功能，请继续往下进行。

Step 5 完成上述测试GSM modem后，请打开SNMP Web Pro 页面，选择Event action，将‘Send SMS while any UPS's event occurs’选中。请参考下图Diagram 4-15。

Step 6 选择 SMS ，在该页面进行如下图 Diagram 4-16 设置：

- A)**设置安装有 SNMP Web Manager 的主机 ip
- B)**设置 SNMP Web Manager 接收 SMS 信息的端口:41222。
- C)**设置 snmp 卡系统的用户名：root
- D)**设置 snmp 卡的密码（即您设定的 snmp card 密码）
- E)**设置接收 SMS 的手机号码。

所有步骤完成后，点击‘Apply’，即完成全部操作。用户可点击 SNMP web Pro 页面‘Test’进行测试。此时，当 ups 产生事件后，snmp 卡就会发出 short message 然后通过 SNMP Web Manager 上设置的 COM 口，将 message 发送到在图 Diagram 4-16 中 E 区域处添加的手机上。

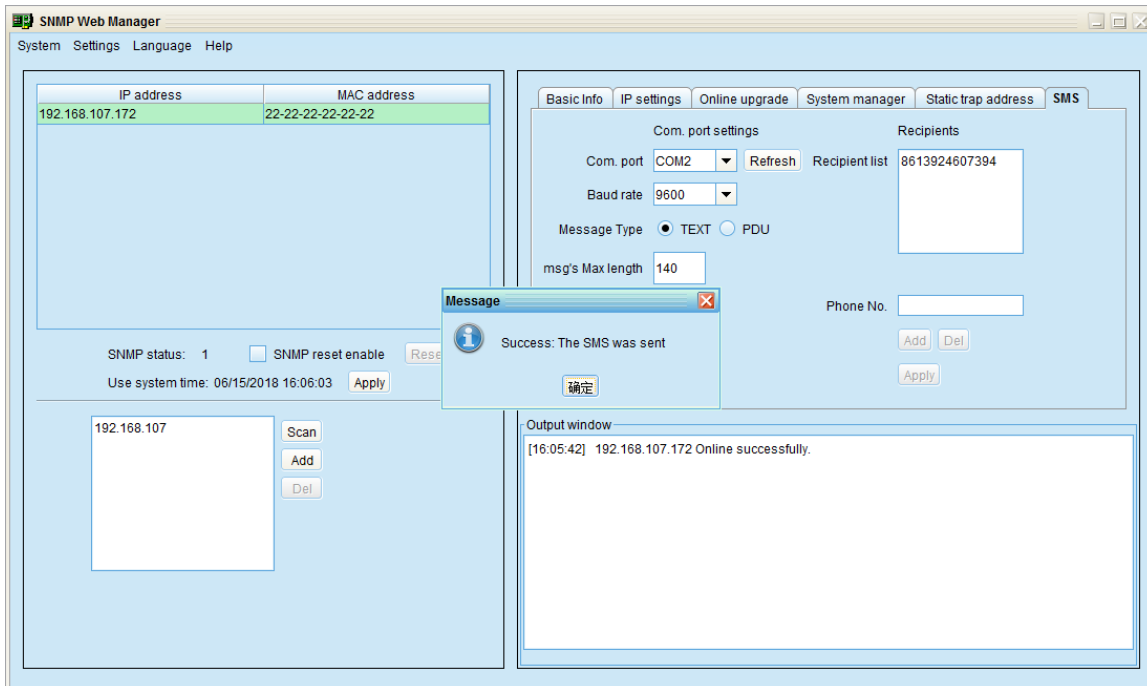


Diagram 4-13

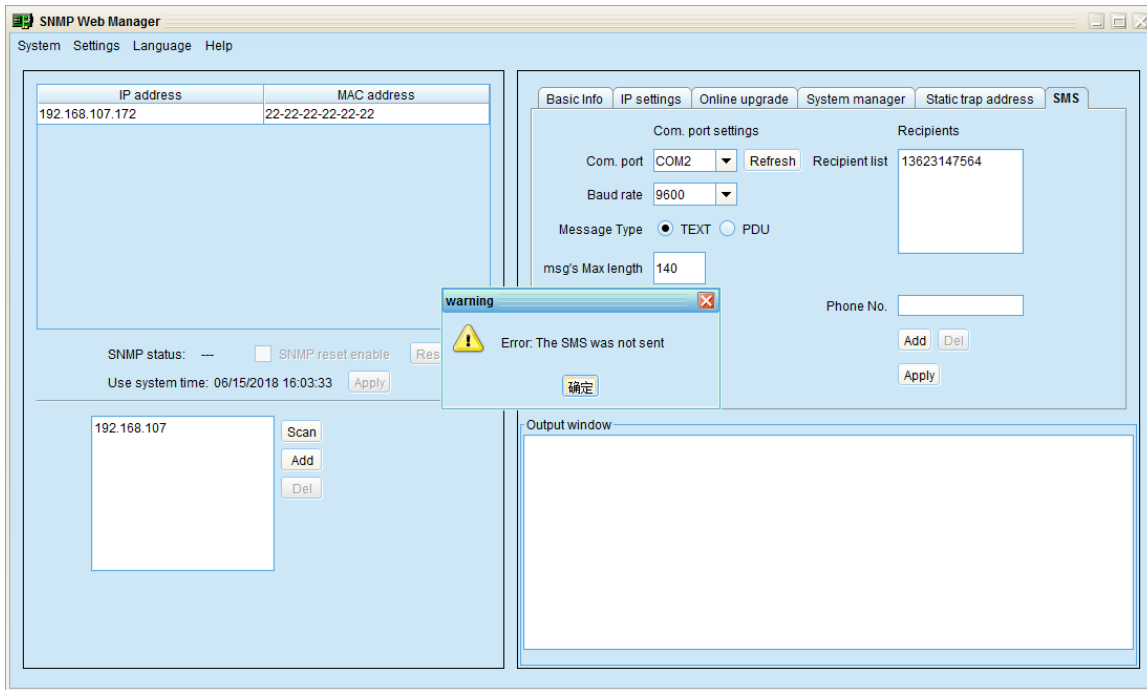


Diagram 4-14

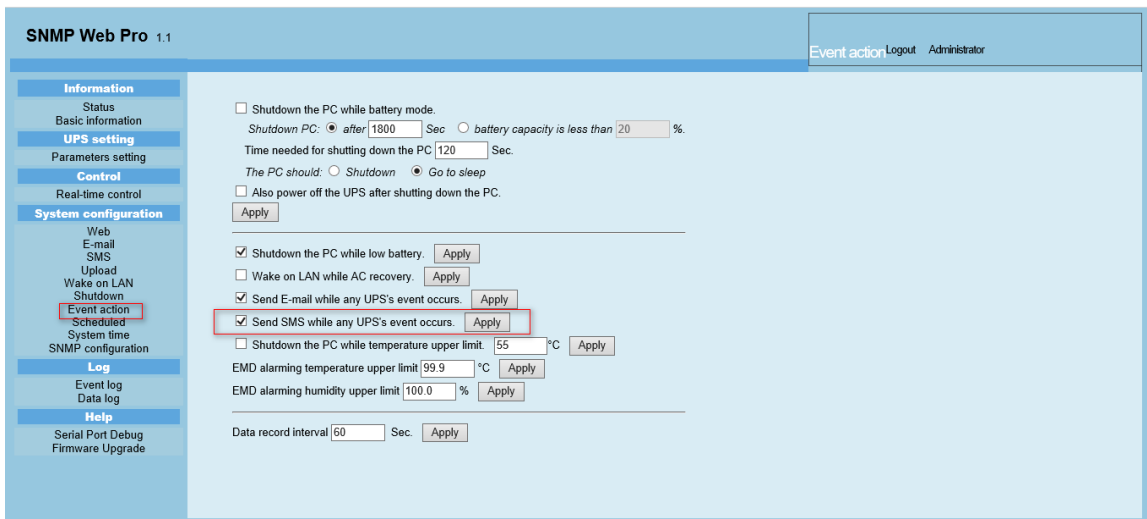


Diagram 4-15

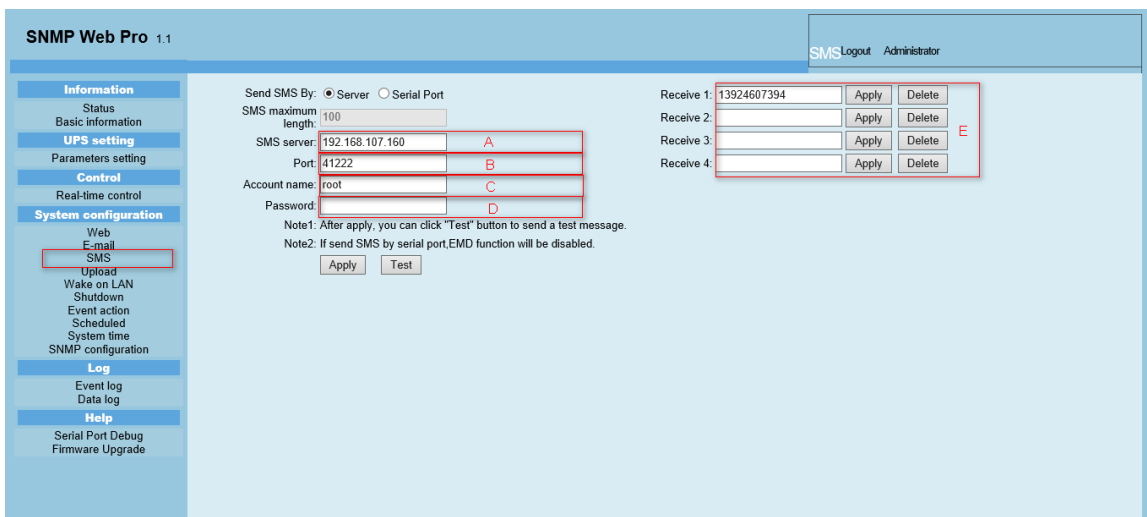


Diagram 4-16

NOTE: It's required to plug-in GSM Modem if sending SMS to mobile phone.

4.3 Language

SNMP Web Manager offers 12 languages:

- ✓ Chinese(Simplified)
- ✓ Chinese(Traditional)
- ✓ English
- ✓ German
- ✓ Italian
- ✓ Polish
- ✓ Portuguese
- ✓ Russian
- ✓ Spanish
- ✓ Turkish
- ✓ Ukrainian
- ✓ French

The default language setting would be English.

4.4 Help

- **About:** Click "Help" menu and select "About" item. It represents the copyright information about software
- **Help:** Click "Help" menu and select "System help" item. It will open the help manual. Before operating software, please read manual carefully.